



# Tropicana 12V200 Ah SMF/VRLA Battery

## TP 200- 12

### Specification

Cells Per Unit	3
Voltage Per Unit	6
Capacity	200Ah@10hr-rate to 1.80V per cell @25C °
Weight	Approx. 29.0 Kg
Max. Discharge Current	2000A (5 sec)
Internal Resistance	Approx. 4.0 mΩ
Operating Temperature Range	Discharge: -20 °C~60 °C Charge: 0C~50C ° Storage: -20C~60C °
Normal Operating Temperature Range	25C± 5C
Float charging Voltage	6.8 to 6.9 VDC/unit Average at 25C °
Recommended Maximum Charging Current Limit	60 A
Equalization and Cycle Service	7.3 to 7.4 VDC/unit Average at 25C °
Self Discharge	Tropicana Valve Regulated Lead Acid (VRLA) batteries can be stored for more than 6 months at 25C. Self-discharge ratio less than 3% per month at 25C. Please charge batteries before using.
Terminal	Terminal F14/F16
Container Material	A.B.S. (UL94-HB),

Certified



9001-2008

Compliance



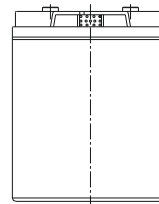
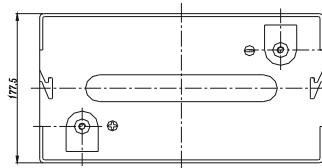
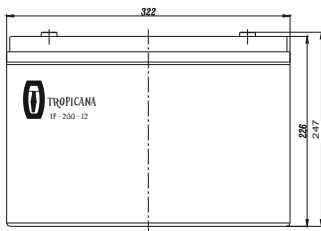
JIS 8702C,  
Pt-I,II,III



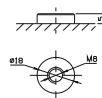
IEC 60896  
21 & 22

### Dimensions

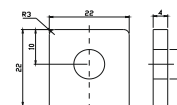
Unit: mm Dimension: 322(L) × 177.5(W) × 247(H)



Terminal F14



Terminal F16



### Constant Current Discharge Characteristics: A (25C) °

F.V/Time	5MIN	10MIN	15MIN	30MIN	1HR	2HR	3HR	4HR	5HR	8HR	10HR	20HR
4.80V	545.1	408.3	344.7	220.8	130.0	77.79	53.77	44.06	36.07	24.84	21.01	11.55
5.00V	529.4	388.5	337.6	217.2	129.4	77.20	53.56	43.86	35.86	24.64	20.80	11.34
5.10V	513.7	374.8	332.3	215.3	128.2	76.62	53.15	43.66	35.64	24.44	20.60	11.13
5.25V	461.3	345.9	316.4	209.9	127.0	76.03	52.94	43.25	35.22	24.24	20.40	10.92
5.40V	416.3	315.4	291.7	200.7	124.0	74.67	51.50	42.23	34.58	23.83	20.20	10.71
5.55V	355.5	281.9	261.6	188.0	117.8	71.35	49.23	40.19	33.10	22.82	19.59	10.08

### Constant Power Discharge Characteristics: W(25C) °

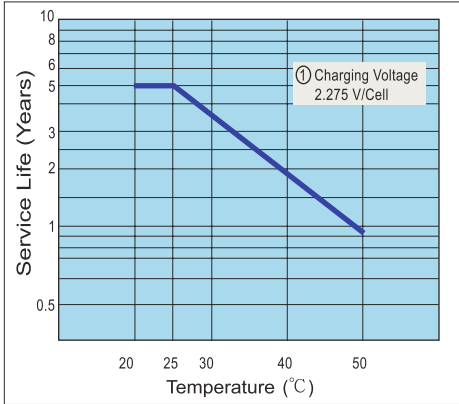
F.V/Time	5MIN	10MIN	15MIN	30MIN	1HR	2HR	3HR	4HR	5HR	8HR	10HR	20HR
4.80V	2819	2174	1896	1259	751.1	458.4	319.9	262.6	215.1	148.3	125.5	69.26
5.00V	2764	2108	1865	1243	749.3	456.0	320.0	262.3	214.6	147.6	124.7	68.06
5.10V	2732	2052	1844	1234	743.5	453.3	318.6	261.7	213.9	146.6	123.6	66.80
5.25V	2487	1911	1759	1206	736.8	450.0	317.4	259.3	211.3	145.4	122.4	65.54
5.40V	2265	1761	1626	1156	723.2	444.2	308.7	253.4	207.5	143.0	121.2	64.28
5.55V	1990	1593	1464	1086	692.3	427.7	295.4	241.1	198.6	136.9	117.6	60.50

All mentioned values are average values.

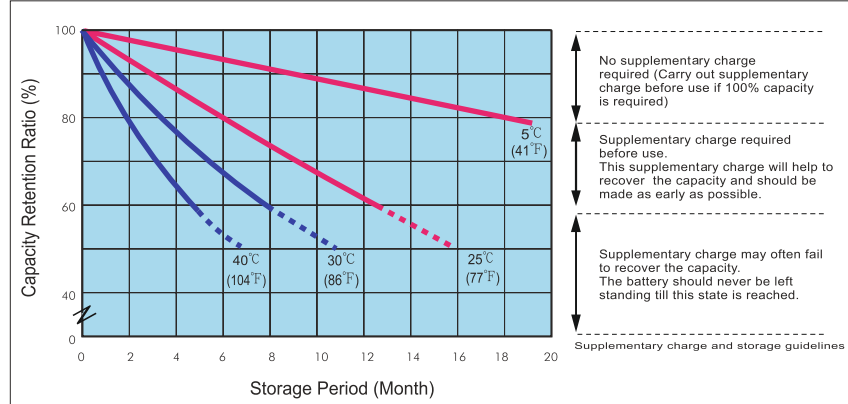


# Tropicana 12V Series SMF/VRLA Battery

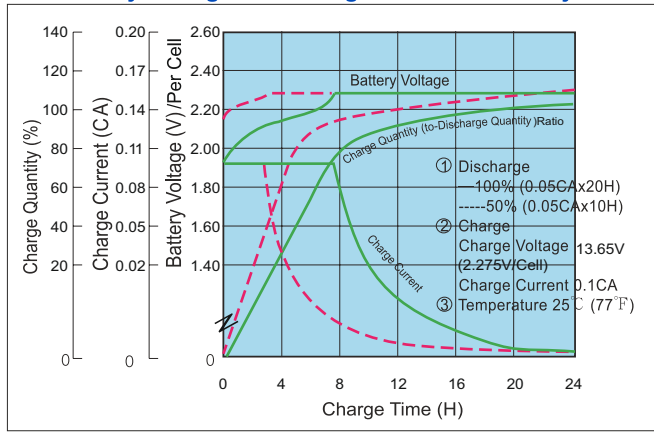
## Trickle (or Float) Service Life



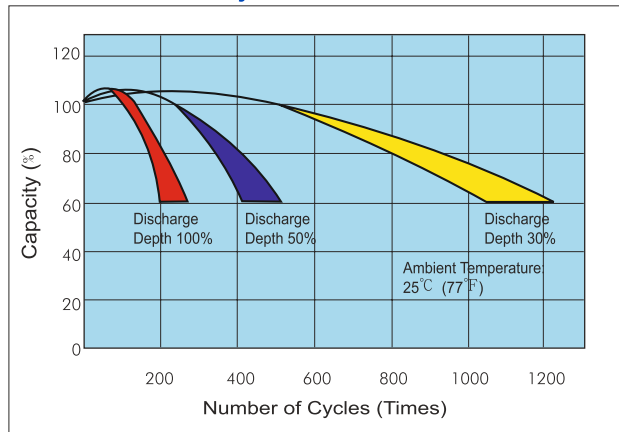
## Capacity Retention Characteristic



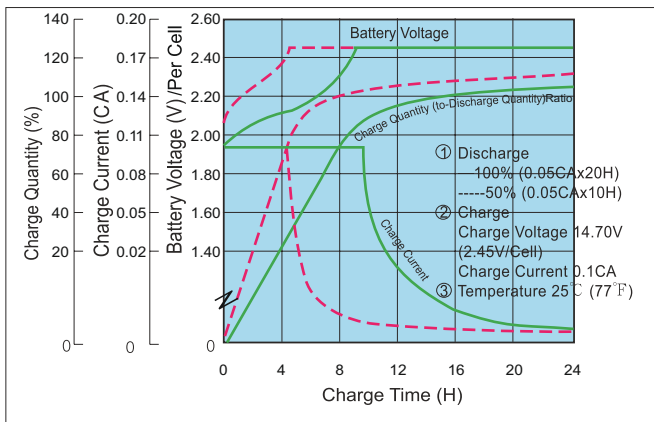
## Battery Voltage and Charge Time for Standby Use



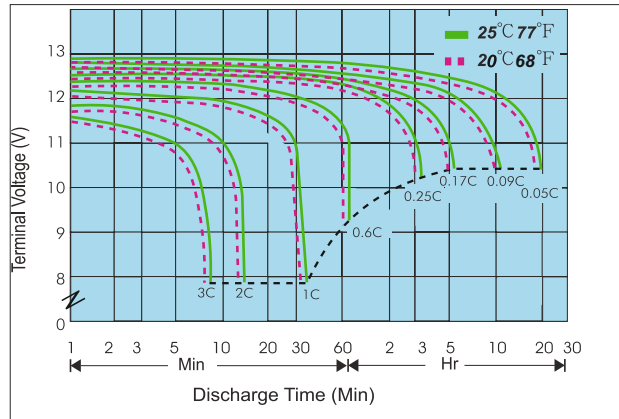
## Cycle Service Life



## Battery Voltage and Charge Time for Cycle Use



## Terminal Voltage (V) and Discharge Time



## Charging Procedures

Application	Charge Voltage(V/Cell)			Max.Charge Current
	Temperature	Set Point	Allowable Range	
Cycle Use	25°C(77°F)	2.45	2.40~2.50	0.3C
Standby	25°C(77°F)	2.275	2.25~2.30	

## Discharge Current VS. Discharge Voltage

Final Discharge Voltage V/Cell	1.75	1.70	1.60	1.30
Discharge Current(A)	0.2C>(A)	0.2C<(A)<0.5C	0.5C<(A)<1.0C	(A)>1.0C

Tropicana Enterprises Private Limited  
 A-232, Okhla Industrial Area, Ph-I,  
 New Delhi-110020, India  
 T: +91-11-26810258, 26810260  
 Email: sales@tropicana-power.com  
 www.tropicana-power.com

